

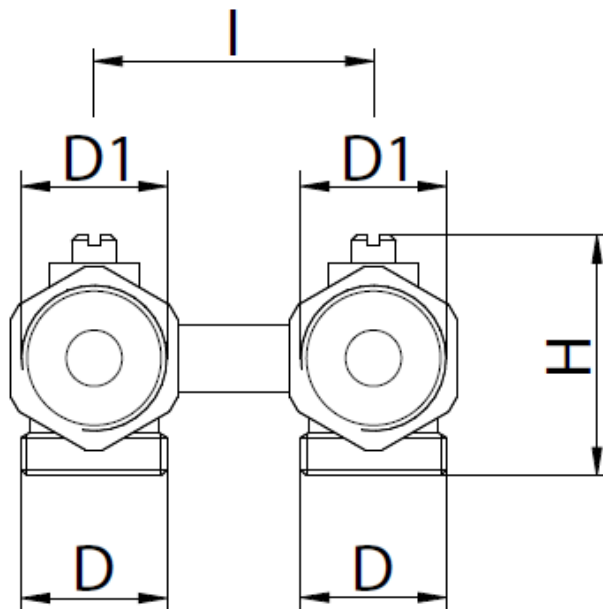


301 – ANGLE “H” DOUBLE VALVE



Technical Characteristics

Body	Brass CW617N
Union	Brass CW617N
Max working temperature	90 °C (194 °F)
Max working pressure	16 bar



Art.301

D	D1	H	I
3/4"	3/4"	42	50

Art.301X connection 24x19

D	D1	H	I
24x19	3/4"	42	50

MADE IN ITALY

bianchifratelli.it

BIANCHI F.LLI S.p.A.

VIA VALDORO 5—P.O. BOX 66—25065 LUMEZZANE (BRESCIA) — ITALY

PHONE: +39 030 8920386—FAX: +39 030 8922518 / WWW.BIANCHIFRATELLI.IT - INFO@BIANCHIFRATELLI.IT